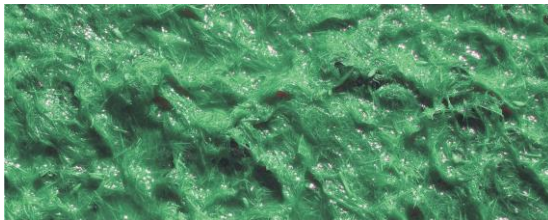




Spray Guard® – A Cross-linked Fiber Matrix (CFM) was designed to be used within the SMM/BFM specification category when a cost effective, high performance erosion control and vegetative establishment product is needed. Spray Guard® was created to join the same family of Guard products using patented technology from Mat, Inc. that includes the original BFM – Soil Guard® and FRM, Flex Guard®.



### *Reliable Features Reduce Overall Costs*

#### No Cure Time Required

Phase II compliant Spray Guard® adheres to soil immediately, creating an instant barrier from the pounding rain.

#### Application Versatility

Spray Guard® conforms and securely bonds to virtually all slopes and soil types, even where most erosion control products can be impossible to install.

#### Nontoxic Biodegradable

Spray Guard® is non staining and nontoxic green/blue mat that prevents soil erosion without the hazards of staples or netting. Completely biodegradable, it enriches the soil over time.

Made in the U.S.A.

### *Spray Guard® Prevents Soil Loss Immediately*

Spray Guard® prevents soil loss and promotes plant growth on challenging sites. Laboratory testing shows that Spray Guard™ prevents 95.4% less soil loss per acre than untreated bare soil. Spray Guard® helps you leverage the speed and cost efficiency of hydraulic application for dependable results.

### *Effective Performance*

Spray Guard® delivers immediate stabilizing results even without cure time and performs as well as the alternatives. Tests independently conducted at the Texas Transportation Institute Erosion Control Lab revealed that Spray Guard® reduced soil loss by 95.4% , and a Cover Factor of 0.046.

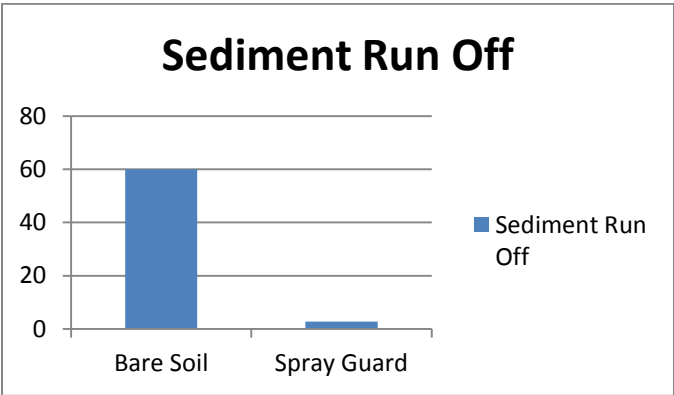
### *Structured To Promote Germination*

As a Crosslinked Fiber Matrix, Spray Guard® chemically bonds with soil and forms a strong, but porous wood fiber mat that is strong enough to hold up in rainy conditions, but porous so that vegetation easily penetrates the growth matrix to quickly enhance the project's visual appeal. And that makes you look good too.

### *Fully Nontoxic and Biodegradable*

Spray Guard® is completely biodegradable and non-toxic. The specially engineered material won't harm the environment or wildlife; it actually enriches the soil as it degrades, leaving residue. Spray Guard™ is a responsible and cost effective choice for residential, commercial, wildlife, wetland or other environmentally sensitive application.





Mean total runoff volume and from the bare soil and Spray Guard™ experiment data is from TTI Erosion Lab.

### Choose Spray Guard® CFM when:

- Steep or rugged terrain make soil preparation difficult or impossible.
- Moderate slopes or surface flows require erosion protection for up to six months.
- Nearby wildlife habitat or residential areas need nontoxic solutions.
- Cost effectiveness, timeliness results and quality are required.

With its accurate chemistry, trust Spray Guard® to produce Easy, Consistent and Reliable results.



### Quality Erosion Control Products

Contact Mat, Inc. at 1-888-477-3028 or visit our website at [www.matinc.biz](http://www.matinc.biz) today to learn more about how Spray Guard® can help you hold your ground.

**Made in the U.S.A.**

### Tech Specs

Product properties have been determined using scientifically sound and reliable test methods. Other test methods may produce slightly different results.

**Ingredients:**

- Thermally Processed Wood Fiber .....>88%±1%
- Hydro-Colloid Tackifier.....5%
- Man-made Biodegradable Synthetic Fiber.....2.5±1%
- Basic Green or Brilliant Blue dye .....<1%
- Trade secret .....<1%
- Trade secret .....<1%
- Trade secret .....<1%

**Coverage:**

3500Lbs./Acre to achieve 100% coverage.

| “C” Factor                    | 2” Rainfall |
|-------------------------------|-------------|
| Spray Guard®                  | 0.046       |
| Bare Soil                     | 148.2       |
| Percentage % Of effectiveness | 95.4        |

Results confirmed by Texas Transportation Institute (TTI). Testing conducted March 2017. ASTM D6459.99.

**Performance:**

- Drying Time .....\*2-48 Hours
  - Longevity .....12-24 Months
- \*Depending on the right conditions.  
Increased cure time enhances performance

**Packaging and Shipping**

Net Wt. 50 Lbs. 22.6 Kg.  
Net dry Wt. 44-45 Lbs.

Packaged in 50 Lb. (22.6 Kg.) plastic bags.  
Available in palletized 36/40 bag units or 18/20 bag units.

Product Certification and GHSDS are available upon request.